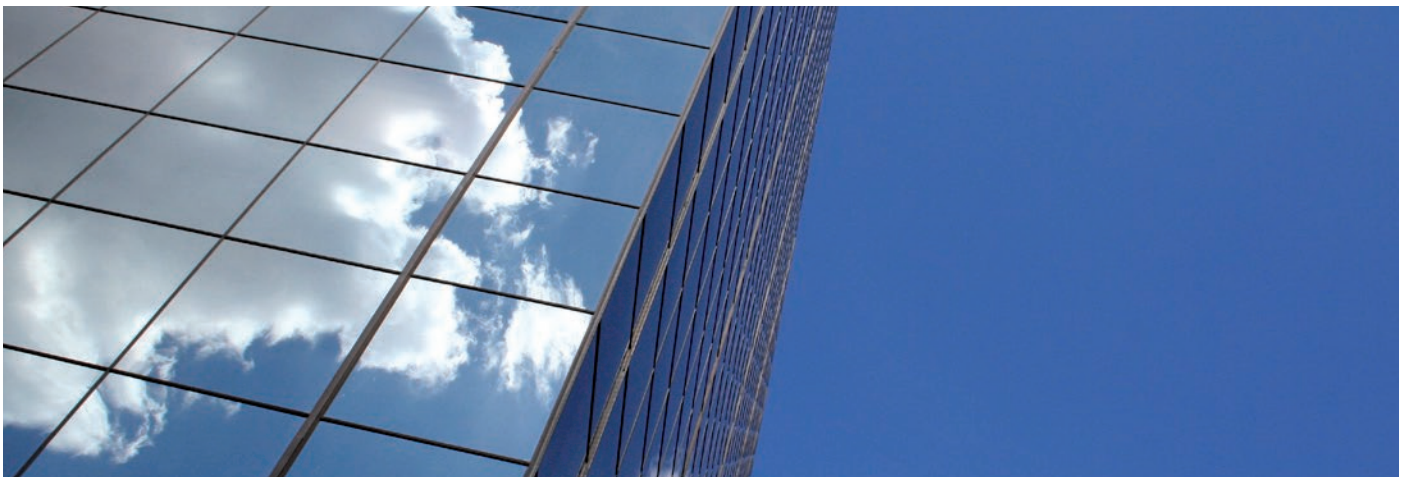


NANO-fluid NF 1201

NANO-fluid Glass / Ceramic(s)

- Brilliant surfaces with Lotus effect
- Long-term protection
- Easy cleaning
- Hygienic cleanliness
- Environment friendly



NF1201 is a product of nanotechnology, which on glass & ceramic(s) surfaces causes a very good, long sustained behaviour to drip off aqueous and oily liquids. Dirt and lime residuals also do not cling. Only water without aggressive cleaning agents is necessary for cleaning. The fluid increases the hygiene, saves money and preserves the environment.

Areas of application:

Window glasses, shop windows, skylights, winter gardens, shower cubicles from glass, glass separations, tiles, WC ceramic(s), washbasin, ceramic(s) soils and walls, ornament-ceramic(s). Application to metal surfaces (faucets/taps etc.) is likewise possible.

The surface must be free of fat, oil, wax, silicone and cleaning agents.

Cleaning:

Normally soiled windows are cleaned with the NANOSHEL Neutral cleaner NR1301. Spray the cleaner on the surface or spray the cleaner on a cloth and dispense it. Let the cleaner act on the surface for 1 -3 minutes, depending on the staining.

If the surface is heavily soiled, clean it with the NANOSHEL Abrasive cleaner NR1304. Apply the cleaner with a cloth or a cleaning sponge in rotary movements. Let the cleaner act on the surface for 3 - 5 minutes, depending on the staining. Afterwards rub off the surface with a wet cloth or a cleaning sponge.

Clean the surface with plenty of water and a wet cloth (preferably the NANOSHEL NT1501 Cleaning cloth). Repeat this until dirt particles und rests of cleaning agents are completely removed.

The NANOSHEL cleaners are easy to apply. They leave neither on rubberized nor on plastic surfaces traces. Rests of cleaners can be washed off easy. It is not necessary to cover plastic add-on parts or rubber gaskets.

Attention: If washed with clear water, the surface should show no drop formation after the cleaning. Repeat the cleaning if drops or streaks are formed.

NANO-Coating

The surfaces have to be dry and free from dirt, Shake NANOSHEL NF1201 Glass/Ceramic(s)-Fluid well before use. Spray approx. 8 – 10 ml NANOSHEL NF1201 evenly on an area of 1 m² and distribute it evenly with the polishing cloth. (10 – 15 ml match approx. 4 – 5 spray puffs) Attention: Application of more material will not result in better effect and performance.

Let the fluid act on the surface for 15 – 30 minutes. The action time is necessary for the basic physical forming on the surface. During the action time a grey veil is formed on the surface. This is no defect, but a hint of complete wetting.

Remove the grey veil after the action time through furbishing the surface. Use only a dry and clean cloth (preferably with the NANOSHEL NT 1501 Polishing Cloth; no microfiber cloth because of abrasion

effect). If you furbish mechanically, use only dry cotton- or lambskin clothing without additives like wax, oil, fat or grinding material.

After furbishing do not strain the surface for 60 minutes. Complete hardening is reached after 24 hours. The lotus effect sets in after approx. 60 minutes and reaches his maximum only after complete hardening.

Sometimes a light residual veil is still visible after furbishing at certain lighting conditions. This residual veil should only be removed after complete hardening (approx. 24 hours). Use a wet cloth (preferably the NANOSHEL NT1501 Cleaning cloth) and wipe the surface.

Proof of performance after hardening: Water will to develop drops, but not an even film.

Cleaning of the coated surface:

Clean the coated surface regularly! But there will be no aggressive cleaning agents necessary (acid, basic or abrasive), because dirt, bacteria and lime will not stick firmly on the Coated surface. If the lotus effect decreases clean the surface with a wet sponge and, if necessary, with a mild cleaner (e.g. NANOSHEL NR1301) to restore the nano effect.

Instruction:

This manual is based upon scientific research and experience. It does not excuse the user from verifying, whether product and method are appropriate to his special application. In particular, we are not liable for applications and methods that are not expressly mentioned in written form.

Safety measure:

The use of gloves is suggested. NANOSHEL NF1201 Glass/Ceramic(s)-Fluid and NANOSHEL Abrasive cleaner NR1304 dehumidify the skin. Store inaccessible for kids.

Environmental conditions:

- not colder than + 5°C (air temperature / surface temperature)
- not warmer than + 30°C (air temperature / surface temperature)
- do not use under direct, intensive sun exposure (summer sun)
- do not use if it rains or snows (outdoor use)

Specifikations	Car Paint Sealing
dilution	use only undiluted
consumption indications	approx. 08 – 10 ml per m ²
drying/film strength	min. 60 minutes until 2 hours
complete age hardening	after 24 hours
storage temperature	+ 5°C - + 25°C, protect against direct sun exposure and frost, store well locked in the original bundle. Use opened bundle within 6 months.